



**ANALYSIS OF FEEDBACK ON ACADEMIC PERFORMANCE AND
INSTITUTIONAL AMBIENCE BY STAFF, AY: 2018-2019**

A. INSTITUTIONAL AMBIENCE

SI No.	Criteria's	Excellent	Very Good	Good	Satisfactory	Poor
1	Working Atmosphere	42.08%	36.92%	14.01%	7%	0%
2	Internet and Connectivity	9.10%	54.50%	9.10%	24.20%	3.10%
3	Infrastructure & Facilities (Staffrooms, Classrooms, Laboratories)	43.20%	50.10%	5.80%	1%	0%
4	Toilet & Washroom Facilities	15.20%	36.40%	6.00%	24.20%	18%
5	Harmony among the staff members	45.50%	36.70%	14.80%	0%	3%
6	Satisfaction on ICT facilities in classrooms	16.80%	24.60%	28.40%	30%	0%
7	Satisfaction level on the library books and Journals	18.90%	20.40%	21.30%	30.80%	8.60%

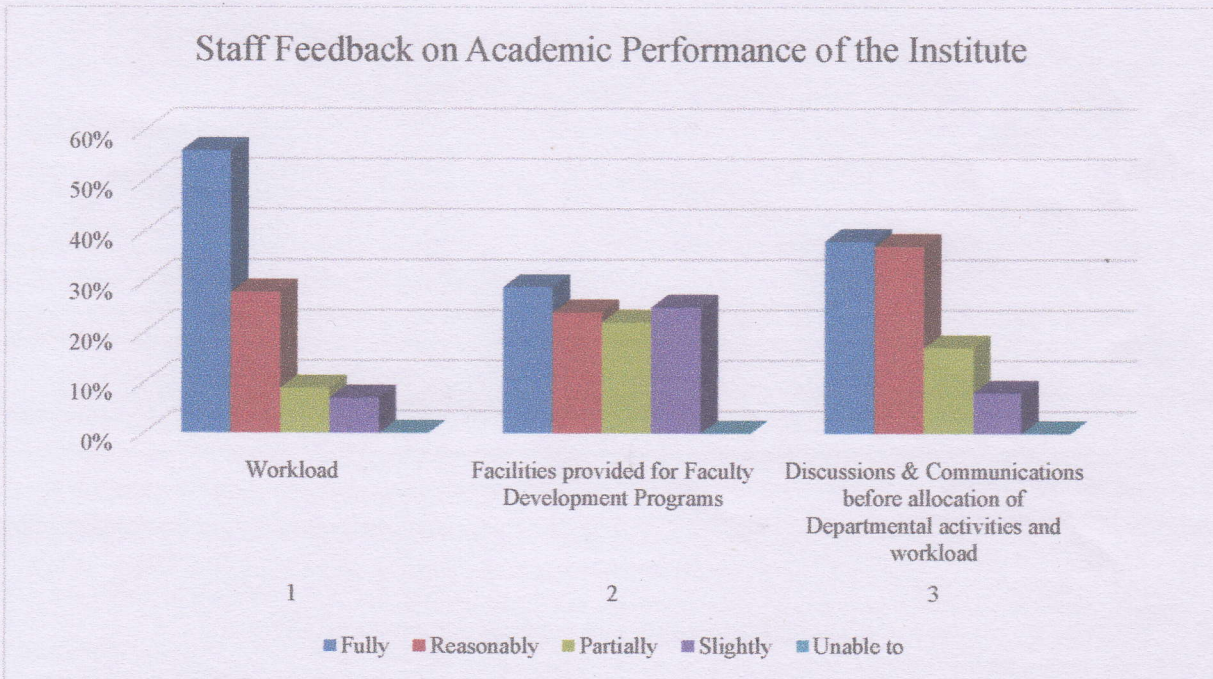
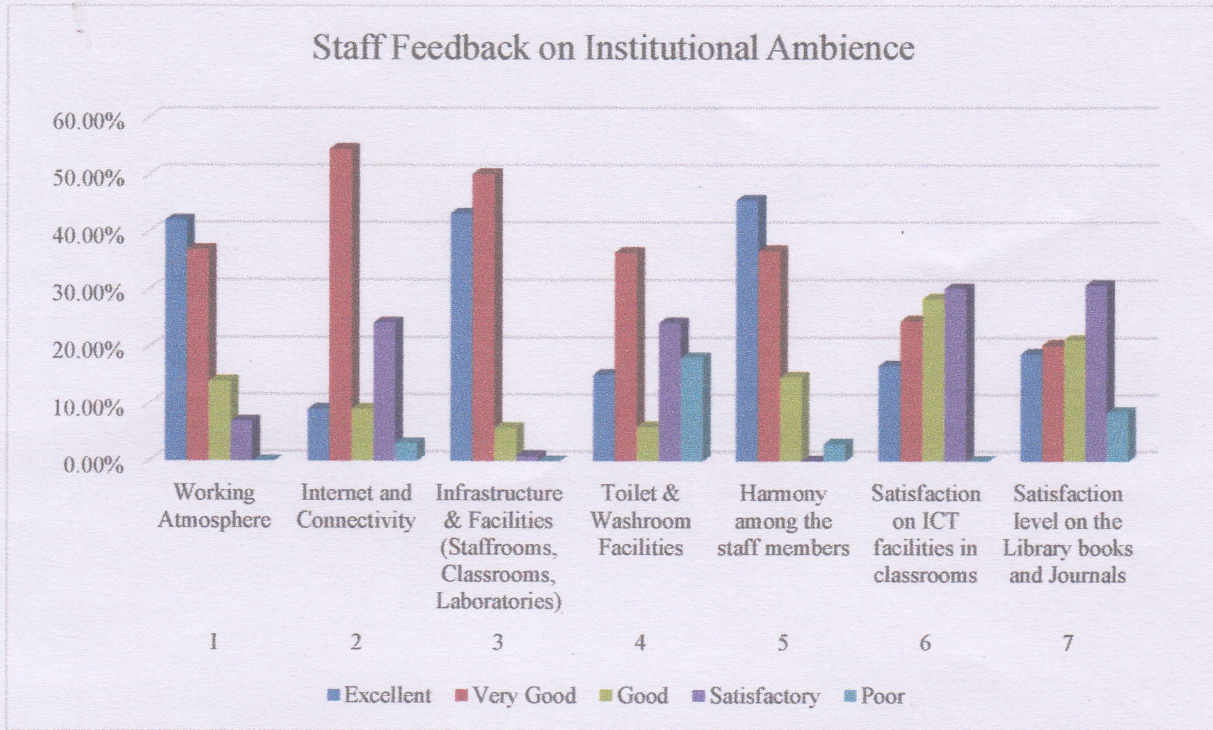
B. ACADEMIC PERFORMANCE

SI No.	Criteria's	Fully	Reasonably	Partially	Slightly	Unable to
1	Workload	56%	28.00%	8.90%	7%	0%
2	Facilities provided for Faculty Development Programs	29%	24%	22%	25%	0%
3	Discussions & Communications before allocation of Departmental activities and workload	38%	37%	17%	8%	0%





FEEDBACK ANALYSIS



**NIRMALA COLLEGE OF PHARMACY,
MUVATTUPUZHA-686661, KERALA**



EVALUATION CRITERIA

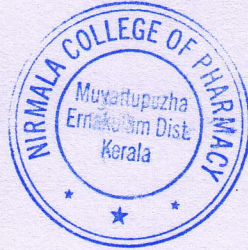
The sum of first three higher levels is considered as the criteria for evaluation and those questions having percentage less than 85 are considered for improvement.

RECOMMENDATIONS BY FEEDBACK COMMITTEE

These are the following areas recommended for improvement

- Improve Internet Connectivity.
- Toilet & Washroom Facilities can be modified.
- ICT facilities in classrooms can be provide with
- Satisfaction level on the library books and Journals
- Facilities provided for Faculty Development Programs

Prepared by
dmf
Mrs Mary Joy
Associate Professor,
Member
Feedback Committee



bdp
PRINCIPAL
Nirmala College of Pharmacy
Muvattupuzha, Ernakulam (Dist)
Kerala-686 661