



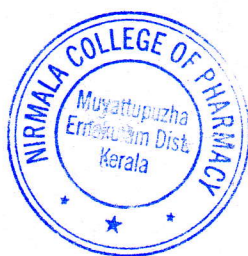
**ANALYSIS OF FEEDBACK ON INSTITUTIONAL AMBIENCE &
ACADEMIC PERFORMANCE BY STAFF, AY: 2019-20**

A. INSTITUTIONAL AMBIENCE

SI No.	Criteria's	Excellent	Very Good	Good	Satisfactory	Poor
1	Working Atmosphere	46.60%	38.30%	12.60%	3%	0%
2	Internet and Connectivity	22.30%	43.50%	19.80%	11.30%	3.10%
3	Infrastructure & Facilities (Staffrooms, Classrooms, Laboratories)	53.60%	42.20%	4.20%	0%	0%
4	Toilet & Washroom Facilities	18.30%	37.20%	12.30%	14.00%	18%
5	Harmony among the staff members	48.60%	32.30%	16.80%	2%	0%
6	Satisfaction on ICT facilities in classrooms	18.90%	26.10%	24.80%	30%	0%
7	Satisfaction level on the library books and Journals	32.50%	22.30%	16.40%	20.60%	8.20%

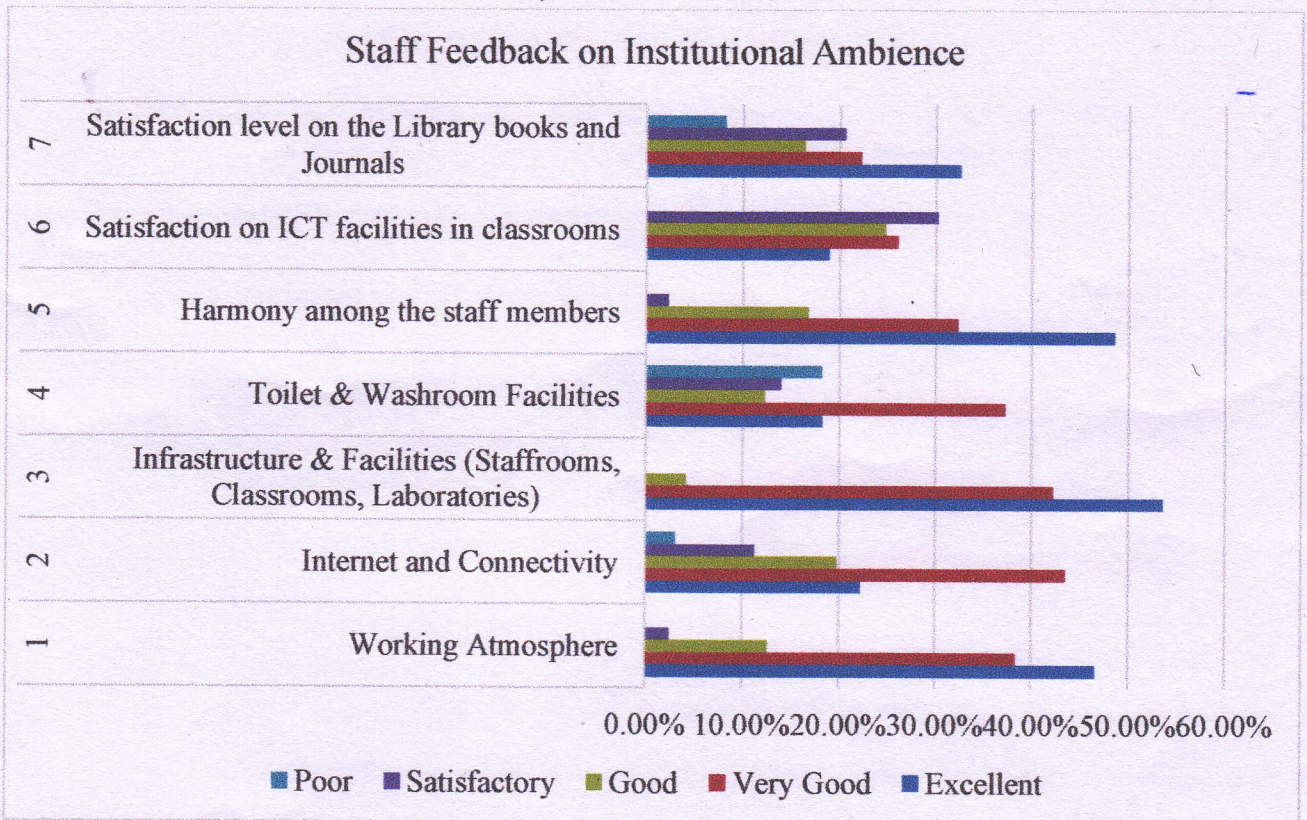
B. ACADEMIC PERFORMANCE

SI No.	Criteria's	Fully	Reasonably	Partially	Slightly	Unable to
1	Workload	63%	22.00%	11.00%	4%	0%
2	Facilities provided for Faculty Development Programs	32%	25%	29%	14%	0%
3	Discussions & Communications before allocation of Departmental activities and workload	35%	42%	22%	2%	0%

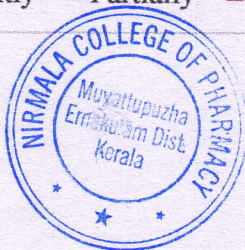
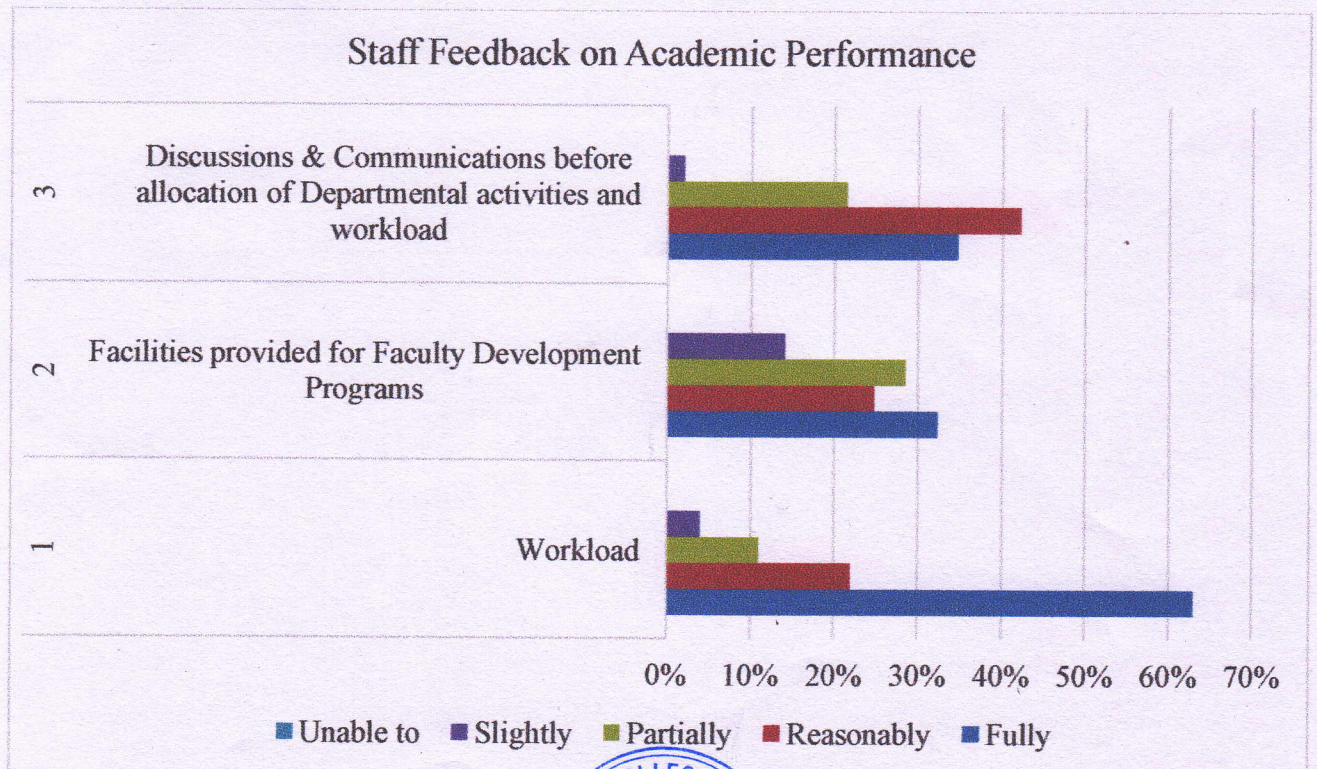




Staff Feedback on Institutional Ambience



Staff Feedback on Academic Performance



**NIRMALA COLLEGE OF PHARMACY,
MUVATTUPUZHA-686661, KERALA**



EVALUATION CRITERIA

The sum of first three higher levels is considered as the criteria for evaluation and those questions having percentage less than 85 are considered for improvement.

RECOMMENDATIONS BY FEEDBACK COMMITTEE

These are the following areas recommended for improvement

- Toilet & Washroom Facilities
- Satisfaction on ICT facilities in classrooms
- Satisfaction level on the library books and Journals

Prepared by
[Signature]
Sims Mary Joy
Associate Professor,
Member
Feedback Committee.



[Signature]

PRINCIPAL
Nirmala College of Pharmacy
Muvattupuzha, Ernakulam (Dist)
Kerala-686 661