

**ANALYSIS OF FEEDBACK ON INSTITUTIONAL AMBIENCE &
ACADEMIC PERFORMANCE BY STAFF, AY: 2020-2021**

A. INSTITUTIONAL AMBIENCE

SI No.	Criteria's	Excellent	Very Good	Good	Satisfactory	Poor
1	Working Atmosphere	53.70%	40.30%	5.00%	1%	0%
2	Internet and Connectivity	42.80%	41.60%	13.60%	2.00%	0.00%
3	Infrastructure & Facilities (Staffrooms, Classrooms, Laboratories)	64.50%	34.50%	1.00%	0%	0%
4	Toilet & Washroom Facilities	26.70%	42.50%	13.60%	12.10%	5%
5	Harmony among the staff members	54.30%	37.10%	6.30%	2%	0%
6	Satisfaction on ICT facilities in classrooms	38.90%	30.70%	22.40%	8%	0%
7	Satisfaction level on the library books and Journals	49.60%	30.10%	19.30%	1.00%	0.00%

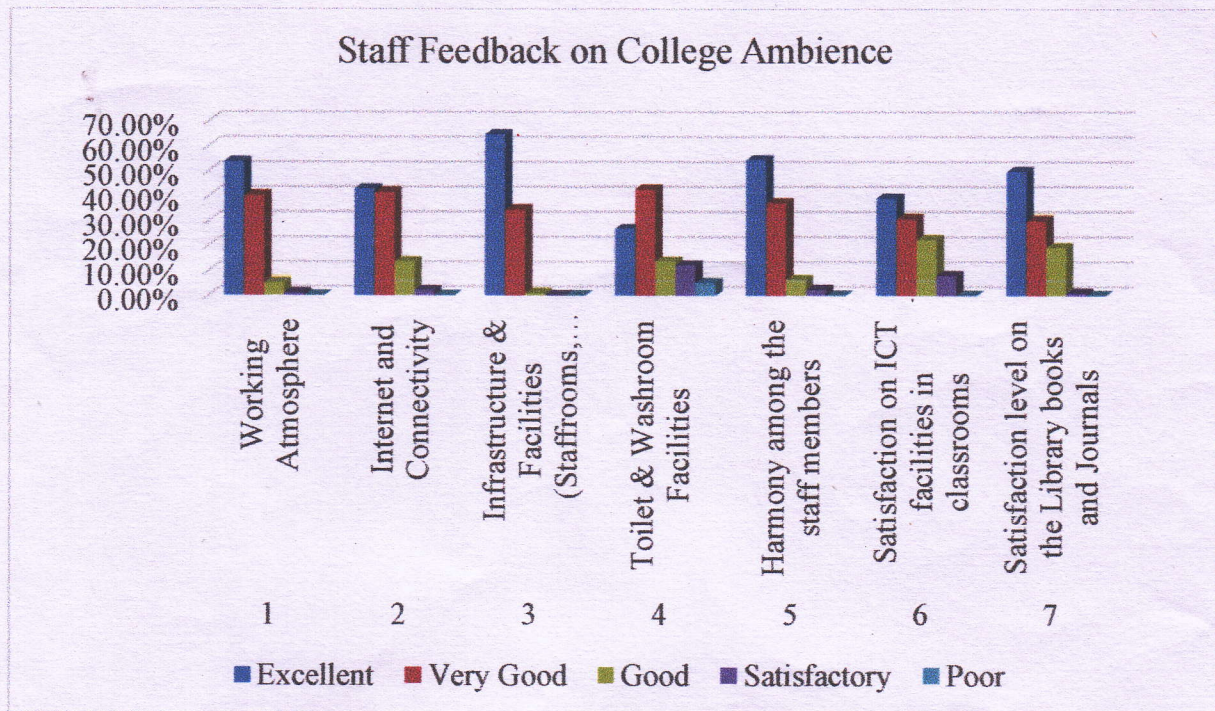
B. ACADEMIC PERFORMANCE

SI No.	Criteria's	Fully	Reasonably	Partially	Slightly	Unable to
1	Workload	68%	25.00%	6.00%	1%	0%
2	Facilities provided for Faculty Development Programs	54%	27%	13%	6%	0%
3	Discussions & Communications before allocation of Departmental activities and workload	49%	46%	5%	0%	0%

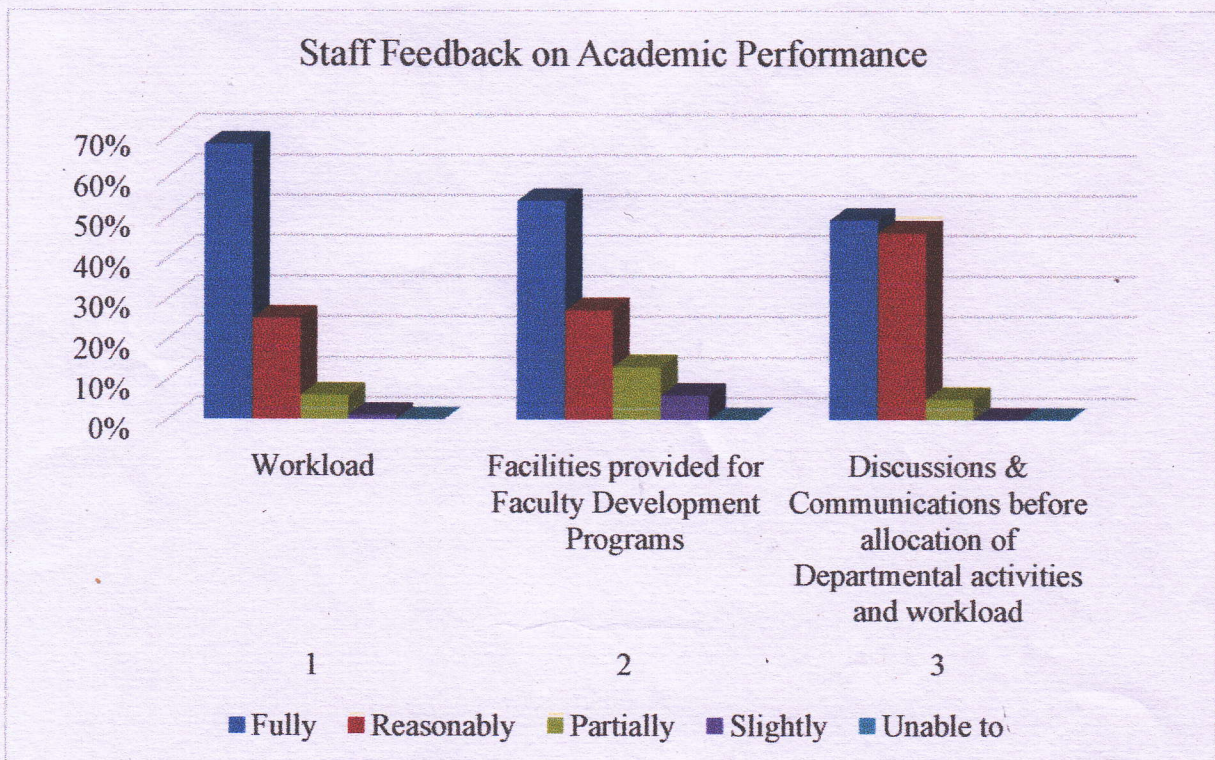




Staff Feedback on College Ambience



Staff Feedback on Academic Performance



**NIRMALA COLLEGE OF PHARMACY,
MUVATTUPUZHA-686661, KERALA**



EVALUATION CRITERIA

The sum of first three higher levels is considered as the criteria for evaluation and those questions having percentage less than 85 are considered for improvement.

RECOMMENDATIONS BY FEEDBACK COMMITTEE

These are the following areas recommended for improvement

- Toilet & Washroom Facilities

Prepared by
Smt
Smt Mary Joy, Associate Professor
Member, Feed back
Committee.



J. Badmanaban

Dr. BADMANABAN. R
PRINCIPAL
Nirmala College of Pharmacy
Muvattupuzha, Ernakulam (Dist.)
Kerala - 686 661